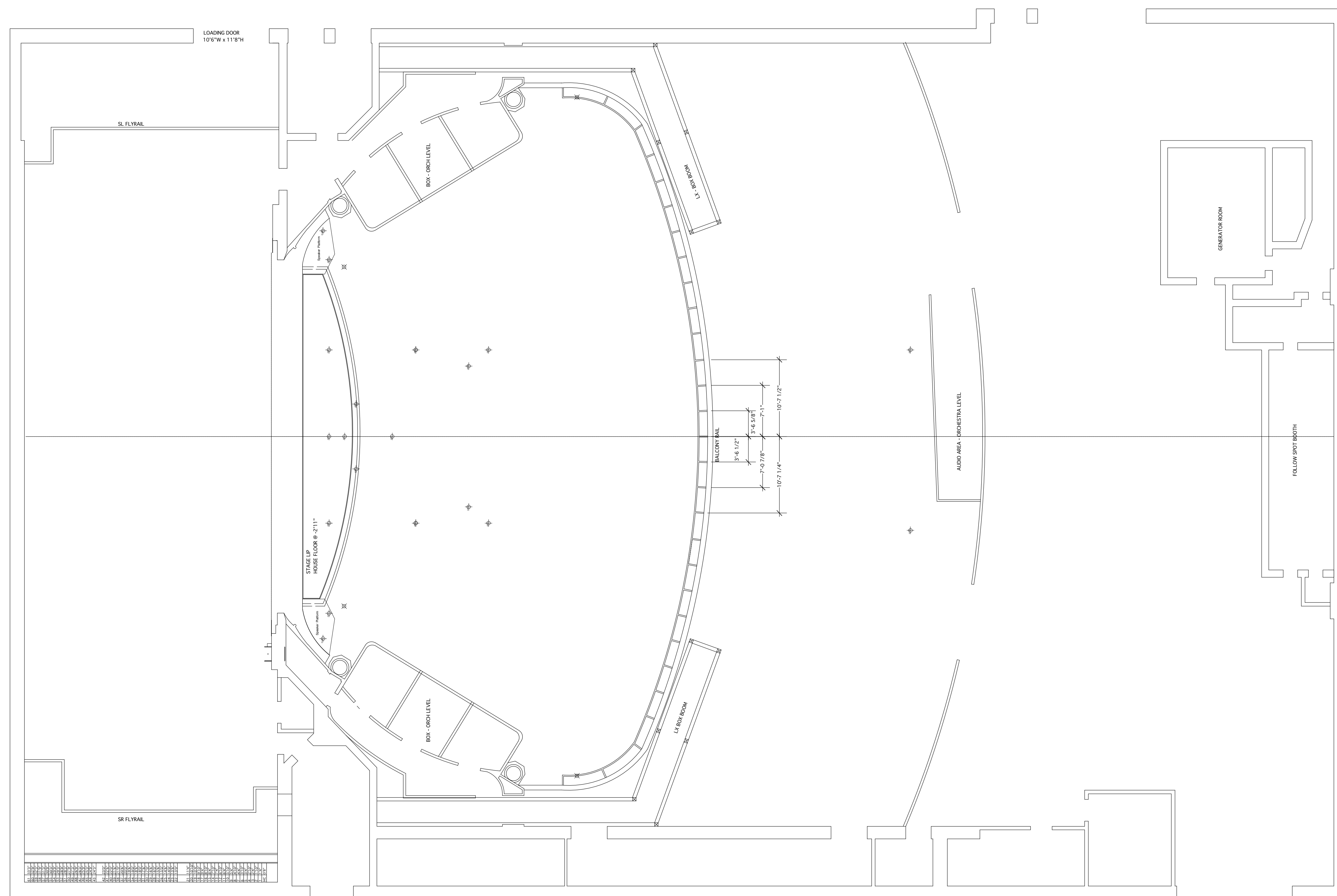
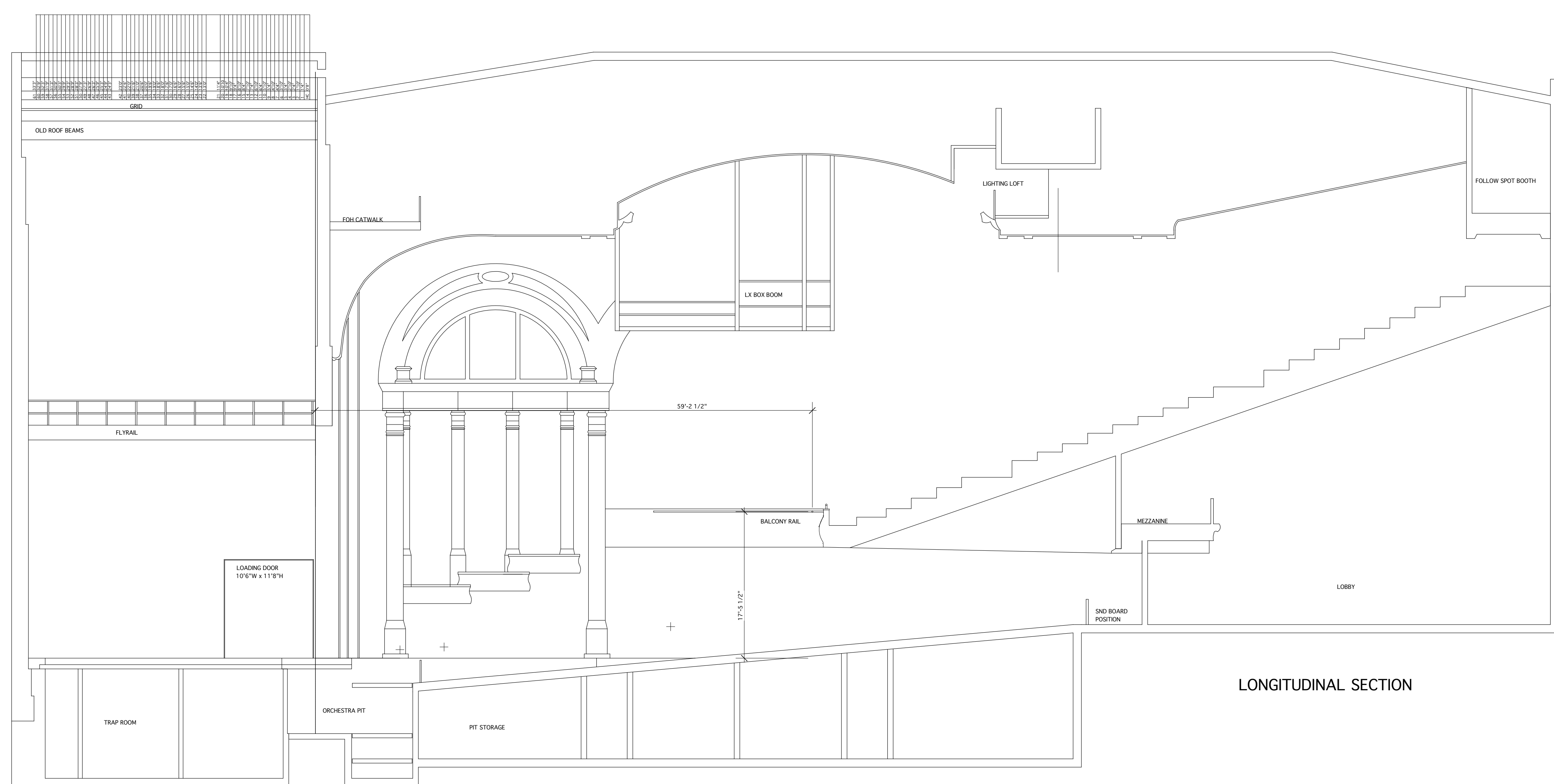


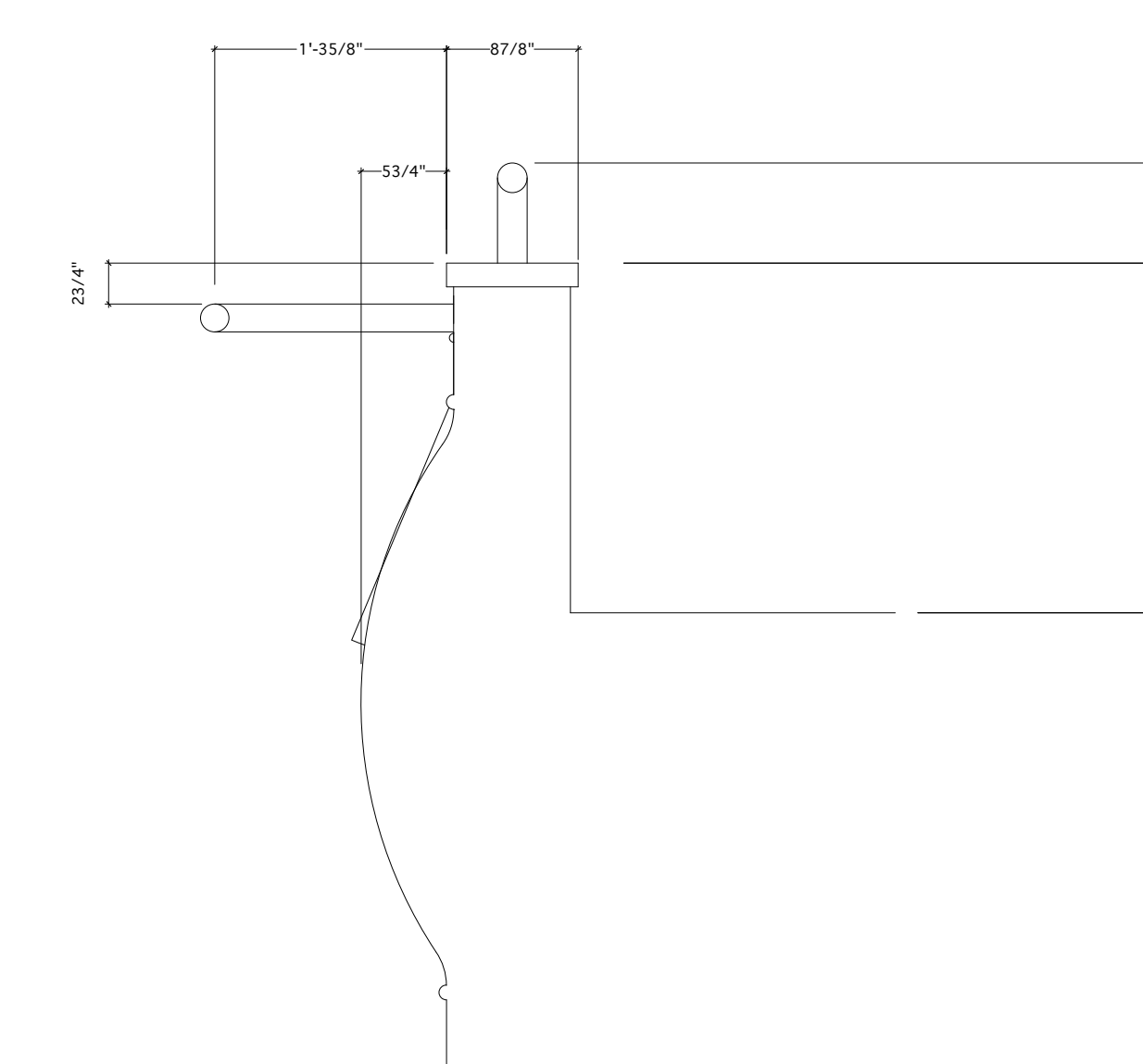
6'-8-9 1/2" 8'-11" 8'-9 1/2" 8'-9 1/2" 8'-9 1/2" 8'-9 1/2" 8'-10 1/2"



MASTER PLAN



LONGITUDINAL SECTION



Balcony Section Not Scaled - Use Measurements as drawn

Revisions

Date	Item
02/08/08	Stage Lip location corrected to 4' 4" DS of Plaster
03/10/08	Proscenium opening height corrected to 27' 8" from 24' 2"
04/08/06	Balcony Rail position raised by 9 1/4" with architectural section detail added
04/08/06	Old Pluricon Proscenium Points added.
12/01/00	Theatre Name Change.
13/03/12	FDR Point Update
16/09/19	FDR Point Update
17/06/08	FDR Point Update

ED MIRVISH THEATRE

244 VICTORIA STREET, TORONTO, ONTARIO, M5B 1V8

SHEET No. TITLE: MASTER PLAN & SECTION

SCALE:

1

DRAWN BY: R. WHELAN DATE: NOV 18/99